



Fosse Green Energy

EN010154

2.7 Waterbodies in a River Basin Management Plan

VOLUME

2

Planning Act 2008 (as amended)

Regulation 5(2)(I)

Infrastructure Planning (Applications: Prescribed
Forms and Procedure) Regulations 2009 (as
amended)

18 July 2025

Planning Act 2008

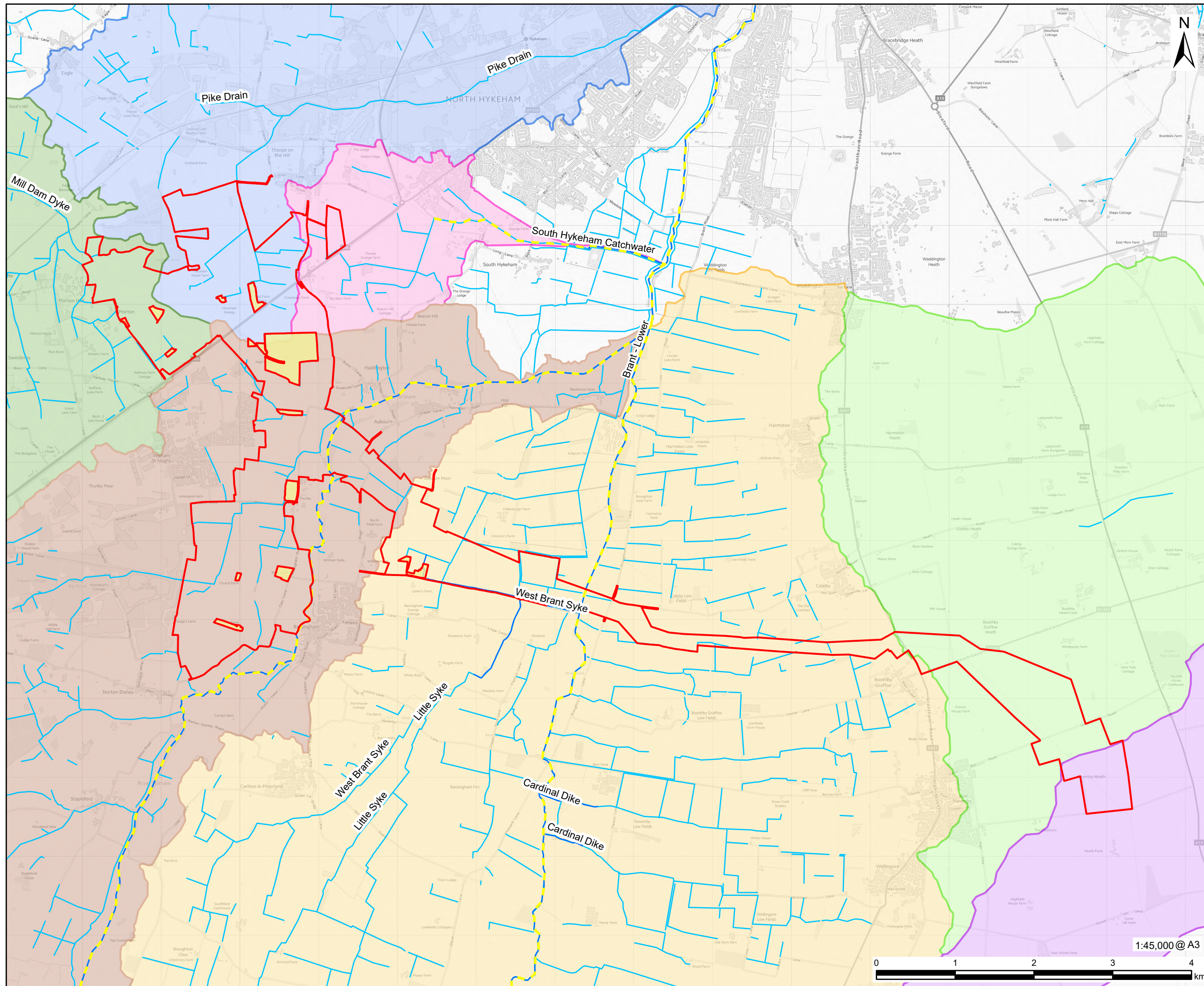
The Infrastructure Planning (Applications: Prescribed Forms and Procedure) Regulation 2009 (as amended)

Fosse Green Energy Development Consent Order 202[]

2.7 Waterbodies in a River Basin Management Plan

Regulation Reference	Regulation 5(2)(l)
Planning Inspectorate Scheme Reference	EN010154
Application Document Reference	EN010154/APP/2.7
Author	Fosse Green Energy Limited





Version	Date	Issue Purpose
Rev 1	18 July 2025	DCO Submission
Rev 2	02 September 2025	Procedural Decision



Fosse Green Energy

Fosse Green Energy Ltd

AECOM Limited
Sunley House
4 Bedford Park
Surrey, CR0 2AP, UK
www.aecom.com

 DCO Site Boundary
 Land Not Included in the DCO Site Boundary
 Main River
 Ordinary Watercourse

— Moderate, Heavily Modified

WFD Water Body Catchment

- Boultham Catchwater Drain
- Brant - Lower
- Dunston Beck
- Metheringham Beck
- South Hykeham Catchwater
- The Fleet Lower Catchment (trib of Trent)
- Witham - conf Cringle Bk to conf Brant

Contains OS data © Crown copyright 2025

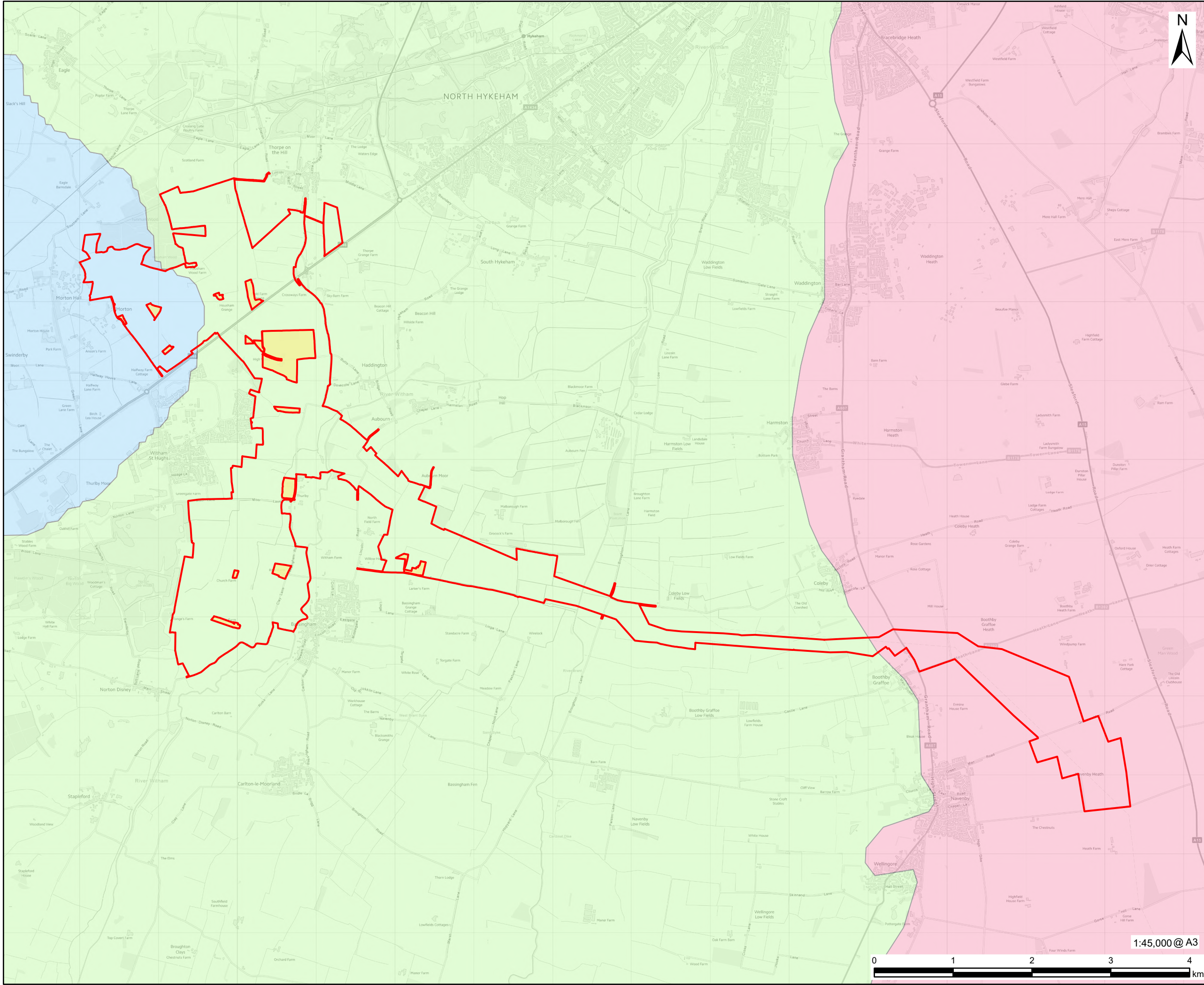
5(2)(l)(iii) Infrastructure Planning
(Applications: Prescribed Forms and
Procedure) Regulations 2009.

DCO Application

Waterbodies in a River Basin Management Plan

Figure 2.7 Page 1 of 2 02

EN010154/APP/2.7



PROJECT
Fosse Green Energy

CLIENT
Fosse Green Energy Ltd

CONSULTANT
AECOM Limited
Sunley House
4 Bedford Park
Surrey, CR0 2AP, UK
www.aecom.com

LEGEND
— DCO Site Boundary
Land Not Included in the DCO Site Boundary
WFD Groundwater Bodies - Cycle 3
Lower Trent Erewash - Secondary Combined
Witham Lias
Witham Limestone Unit A

NOTES
Contains OS data © Crown copyright 2025

Witham Lias and Lower Trent Erewash – Secondary Combined Water Bodies are at Good Status, and Witham Limestone Unit A is at Poor Status

LEGISLATION
5(2)(l)(iii) Infrastructure Planning (Applications: Prescribed Forms and Procedure) Regulations 2009.

ISSUE PURPOSE
DCO Application

FIGURE TITLE
Waterbodies in a River Basin Management Plan

FIGURE NUMBER
Figure 2.7 Page 2 of 2

DOCUMENT REFERENCE
EN010154/APP/2.7

This drawing has been prepared for the use of AECOM's client. It may not be used, modified, reproduced or relied upon by third parties, except as agreed by AECOM or as required by law. AECOM accepts no responsibility and denies any liability whatsoever, to any party that uses or relies on this drawing without AECOM's express written consent. Do not scale this document. All measurements must be obtained from the stated dimensions.